

▶ **POLYMAILLE®  
Extra Thin**



High-compliance vascular prosthesis  
for peripheral bypass

- ▶ **Close to arterial compliance**
- ▶ **Extra thin:** perfect handling  
and conformability to the host artery
- ▶ **Perfect suturability**
- ▶ **Optimum healing**  
no chemical agent
- ▶ **New helicoidal  
reinforcement**  
*SHR®* technology



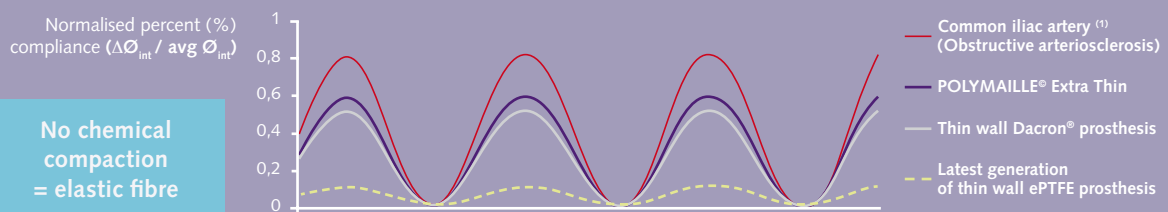
# ► POLYMAILLE® Extra Thin

High-compliance vascular prosthesis for peripheral bypass

## 🕒 CLOSE TO ARTERIAL COMPLIANCE AND PULSATILITY

Due to its unique manufacturing process, with no chemical compaction, POLYMAILLE® Extra Thin is the most compliant and pulsatile vascular prosthesis in the market. Resembling the “elastic” behaviour of the artery, this new generation of vascular prostheses is perfectly suited to peripheral surgery.

### Compliance measurements for various types of arterial replacements ( $\Delta P = 50$ mmHg)



### ► Benefits of compliance

- Limited haemodynamic disorders
- Less neointimal hyperplasia
- Less anastomotic stress
- Limited risk of anastomotic stenosis

► Dynamic behaviour resembling the artery

## 🕒 PERFECT HANDLING AND SUTURABILITY

### ► Polymaille® Extra Thin

- The thinnest wall on the market
- Exceptional flexibility offering perfect handling and conformability to the host artery
- Better suturability with no bleeding from suture holes

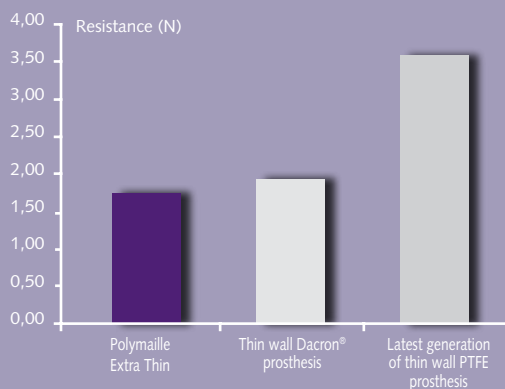
POLYMAILLE®  
Extra Thin<sup>(2)</sup>

0,32 mm

Thin wall Dacron®  
prosthesis<sup>(2)</sup>

0,44 mm

### Suture needle penetration resistance<sup>2</sup>



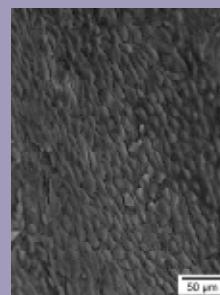
► Unrivalled ease of implantation.

The prime replacement for peripheral vascular surgery

**OPTIMUM HEALING**

- ▶ No chemical compaction agent (methylene chloride): reduced risk of periprosthetic effusion.
- ▶ A unique “formaldehyde and glutaraldehyde free” collagen coated thin wall prosthesis (patented CXE® collagen)
  - No toxicity to periprosthetic tissue
- ▶ Better tissue integration than a conventional thin wall Dacron® prosthesis:

*“(...) at 13 weeks, a lower incidence of endoluminal fibrinous deposits, a higher grade of endothelialized neointimal tissue and a lower grade of macrophages were observed qualitatively and semi-quantitatively in the test article when compared to conventional thin wall prosthesis.”<sup>3</sup>*



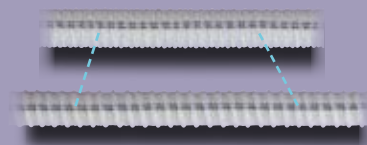
▶ **Reduced risk of periprosthetic effusion**

**A NEW GENERATION OF REINFORCEMENT: SHR® TECHNOLOGY**  
(Stretch Helicoidal Reinforcement)

- ▶ HELICOIDAL reinforcement matching the crimping profile of the prosthesis
- ▶ Higher radial compression strength<sup>(2)</sup>

POLYMAILLE Extra Thin <sup>(2)</sup>	Thin wall Dacron® prosthesis <sup>(2)</sup>
35N	16N

- ▶ Elastic elongation = STRETCH effect
  - The length varies according to the haemodynamic and anatomical stress
  - Less anastomotic stress for long bypasses



POLYMAILLE® EXTRA THIN

Thin wall Dacron® prosthesis

▶ **Unsurpassed kink resistance**

▶ **IDEAL RESPONSE TO ARTICULAR STRESSES**

- The stretch effect allows elastic elongation of the prosthesis in flexion/extension
- The kink resistance maintains the diameter

# POLYMAILLE® Extra Thin



## Cardiovascular

### POLYMAILLE® Extra Thin straight

References	Nominal diameter (mm)	Usable length (cm)
PMET060040	6	40
PMET060070	6	70
PMET060100	6	100
PMET070040	7	40
PMET070070	7	70
PMET070100	7	100
PMET080040	8	40
PMET080070	8	70
PMET080100	8	100
PMET100040	10	40
PMET100070	10	70
PMET100100	10	100

- ▶ Thin wall: 0.32 mm
- ▶ No chemical agents = elastic fibre

### POLYMAILLE® Extra Thin Straight with reinforcement *SHR*®

References	Diameter (mm)	Usable length (cm)	<i>SHR</i> ® (cm) reinforced length	Proximal/distal length (cm)
PMETR06040015	6	40	15	15 / 10
PMETR06040020	6	40	20	10 / 10
PMETR06070020	6	70	20	30 / 20
PMETR06070040	6	70	40	20 / 10
PMETR06100060	6	100	60	25 / 15
PMETR07040015	7	40	15	15 / 10
PMETR07040020	7	40	20	10 / 10
PMETR07070020	7	70	20	30 / 20
PMETR07070040	7	70	40	20 / 10
PMETR07100060	7	100	60	25 / 15
PMETR08040015	8	40	15	15 / 10
PMETR08040020	8	40	20	10 / 10
PMETR08070020	8	70	20	30 / 20
PMETR08070040	8	70	40	20 / 10
PMETR08100060	8	100	60	25 / 15
PMETR10040015	10	40	15	15 / 10
PMETR10040020	10	40	20	10 / 10
PMETR10070020	10	70	20	30 / 20
PMETR10070040	10	70	40	20 / 10
PMETR10100060	10	100	60	25 / 15



Culture Fab - REF CD0009/002

(1) Vascular Surgery. Rutherford. Sixth Edition. Elsevier Saunders.

(2) Issued from CE Mark file.

(3) Namsa-Biomatech study report Evaluation of the local tolerance and performance of a knitted polyester vascular prosthesis following functional implantation in the sheep. 2009

This device is « CE » marked.

**PEROUSE**  
MEDICAL

Cardiovascular Division - Route du Manoir - 60173 Ivry le Temple - France  
Tél: 33 (0) 3 44 08 17 00 - Fax: 33 (0) 3 44 08 17 01

[www.perousemedical.com](http://www.perousemedical.com)