

Endoscope Overview 2020



The Future of Endoscopy Has Arrived.

www.olympus.eu/evix1

Medical Endoscopes

Medical Video Endoscopes	4
Video Gastrosopes	4
Video Duodenoscopes	6
Video Choledochoscopes	6
Video Enteroscopes	6
Capsule Endoscope	6
Video Colonoscopes	8
Video Bronchoscopes	10
Airway Mobilescopes	10
Video Pleuroscopes (Medical Thoracoscopy)	12
Medical Fiber Endoscopes	14
Fiber Bronchoscopes	14
Endoscopy Integration	16
Endoscopic Ultrasound	18
Ultrasonic Videoscopes for EUS	18
Ultrasonic Endoscopes for EBUS	18
Ultrasonic Miniature Probes	20
Surgical Video Endoscopes	22
ENDO-EYE Laparoscopes	22
Cystoscopes	22
Ureteroscopes	22
Rhinolaryngoscopes	24
Tracheal Intubation Scope	24
Surgical Fiber Endoscopes	26
Cystoscope	26
Ureteroscopes	26
Rhinolaryngoscopes	26
Tracheal Intubation Scopes	26
Hysteroscope	26
Notes	28

Medical Endoscopes

Medical Video Endoscopes

	Insertion Tube OD (mm)	Distal End OD (mm)	Channel ID (mm)	Bending (Up/Down)	Bending (Left/Right)	Working Length (mm)	Field of View	Depth of Field (mm)	IEE ²	Comments
Video Gastroscopes										
GIF-EZ1500*	9.6	9.9	2.8	210°/90°	100°/100°	1030	140°	1.5 - 5.5 (near) 3 - 100	NBI, TXI, RDI	EDOF, ErgoGrip, DF, OT, WJ, HDTV
GIF-1100*	8.9	8.9	2.8	210°/90°	100°/100°	1030	140°	2 - 100	NBI, TXI, RDI	ErgoGrip, DF, OT, WJ, HDTV
GIF-HQ190*	9.9	9.9	2.8	210°/90°	100°/100°	1030	140°	2 - 6 (near) 5 - 100	NBI, TXI ¹ , RDI ¹	DF, OT, WJ, HDTV
GIF-H190*	9.2	9.2	2.8	210°/90°	100°/100°	1030	140°	2 - 100	NBI, TXI ¹ , RDI ¹	CF, OT, WJ, HDTV
GIF-1TH190*	10.9	10.0	3.7	210°/90°	100°/100°	1030	140°	2 - 100	NBI, TXI ¹ , RDI ¹	CF, OT, WJ, HDTV
GIF-H190N*	5.8	5.4	2.2	210°/90°	100°/100°	1100	140°	3 - 100	NBI, RDI ¹	OT, HDTV, HF-compatible
GIF-XP190N*	5.8	5.4	2.2	210°/90°	100°/100°	1100	140°	3 - 100	NBI, RDI ¹	OT, HF-compatible
GIF-H185*	9.2	9.2	2.8	210°/90°	100°/100°	1030	140°	2 - 100	NBI, TXI ¹ , RDI ¹	CF, OT, HDTV
GIF-N180	4.9	4.9	2.0	210°/120°	—	1100	120°	3 - 100	NBI	SlimSIGHT
GIF-2TH180**	12.6	12.2	2.8/3.7	210°/90°	100°/100°	1030	140°	2 - 100	NBI	CF, HDTV
GIF-XTQ160	12.9	12.9	6.0	200°/90°	100°/100°	1030	140°	3 - 100	—	—
GIF-H290T°	9.9	9.8	3.2	210°/120°	100°/100°	1030	140°	3 - 100	NBI, TXI ¹ , RDI ¹	OT, WJ, HDTV
GIF-H290Z°	9.6	9.9	2.8	210°/90°	100°/100°	1030	95° (tele) 140°	1.5 - 3 (tele) 7 - 100	NBI, TXI ¹ , RDI ¹	OT, WJ, HDTV, Zoom
GIF-H290EC°	9.6	9.7	2.2	210°/90°	100°/100°	1030	140°	7 - 100	NBI, TXI ¹ , RDI ¹	OT, WJ, HDTV, EC
GIF-FQ260Z°•	10.5	11.0	2.8	210°/90°	100°/100°	1030	60° (tele) 140°	2 - 3.5 (tele) 7 - 100	NBI	AFI, Zoom

* with CV-1500 only

* with CV-190 (PLUS) and CV-1500 only ** with CV-180 or higher

• with CV-290 and CV-1500 only •• with CV-290/-260SL only

¹ only when connected to CV-1500 ² Image-Enhanced Endoscopy

OT = One-Touch Connector DF = Dual Focus CF = Close Focus

WJ = Water Jet EC = Endocytoscope EDOF = Extended Depth of Focus

AFI = Auto-Fluorescence Imaging

Medical Endoscopes

	Insertion Tube OD (mm)	Distal End OD (mm)	Channel ID (mm)	Bending (Up/Down)	Bending (Left/Right)	Working Length (mm)	Field of View	Depth of Field (mm)	IEE ²	Comments
Video Duodenoscopes										
TJF-Q190V*	11.3	13.5	4.2	120°/90°	90°/110°	1240	100°/15° (retro)	5 - 60	NBI, TXI ¹ , RDI ¹	OT, HFT, V-System
TJF-Q180V	11.3	13.7	4.2	120°/90°	90°/110°	1240	100°/5° (retro)	5 - 60	NBI	V-System
TJF-Q290V*	11.3	13.5	4.2	120°/90°	110°/90°	1240	100°/15° (retro)	5 - 60	NBI, TXI ¹ , RDI ¹	OT, HFT, V-System
Video Choledochoscopes										
CHF-B290*	3.53 [‡]	3.3	1.3	70°/70°	—	1920	80°	1.5 - 20	NBI	OT, Baby scope
CHF-V**	5.2	4.9	2.0	160°/130°	—	380	120°	3 - 50	NBI, RDI ¹	—
Video Enteroscopes										
PSF-1*	11.5 ^{§§}	11.3	3.2	180°/180°	160°/160°	1680	140°	2 - 100	NBI, TXI ¹ , RDI ¹	OT, WJ, motorized spiral enteroscope
SIF-Q180	9.2	9.2	2.8	180°/180°	160°/160°	2000	140°	3 - 100	NBI	—
SIF-H290S*	9.2	9.2	3.2	180°/180°	160°/160°	1520	140°	3 - 100	NBI, TXI ¹ , RDI ¹	OT, RIT (HFT, PB), HDTV
Capsule Endoscope										
EC-S10***	11.0	11.0	—	—	—	26	160°	0 - 20	—	—

* with CV-190 (PLUS) and CV-1500 only ** with CV-180 or higher

*** with EC-10 ENDOCAPSULE system only

• with CV-290 and CV-1500 only •• with CV-290/-260SL only

[‡] 3.75 mm from the proximal end to 1390 mm

^{§§} 12.8 mm from the proximal end to rotation part

¹ only when connected to CV-1500 ² Image-Enhanced Endoscopy

OT = One-Touch Connector RIT = Responsive Insertion Technology
WJ = Water Jet HFT = High-Force Transmission

Medical Endoscopes

	Insertion Tube OD (mm)	Distal End OD (mm)	Channel ID (mm)	Bending (Up/Down)	Bending (Left/Right)	Working Length (mm)	Field of View	Depth of Field (mm)	IEE ²	Comments
Video Colonoscopes										
CF-EZ1500DL/I*	12.8	13.2	3.7	180°/180°	160°/160°	1330/1680	160° (near) 170°	1.5 - 5.5 (near) 3 - 100	NBI, TXI, RDI	EDOF, ErgoGrip, DF, OT, RIT, SG, WJ, HDTV
CF-HQ1100DL/I*	12.8	13.2	3.7	180°/180°	160°/160°	1330/1680	160° (near) 170°	2 - 6 (near) 5 - 100	NBI, TXI, RDI	ErgoGrip, DF, OT, RIT, SG, WJ, HDTV
CF-HQ190I/L*	12.8	13.2	3.7	180°/180°	160°/160°	1330/1680	160° (near) 170°	2 - 6 (near) 5 - 100	NBI, TXI ¹ , RDI ¹	DF, OT, RIT, SG, WJ, HDTV
CF-H190I/L*	12.8	13.2	3.7	180°/180°	160°/160°	1330/1680	170°	2 - 100	NBI, TXI ¹ , RDI ¹	CF, OT, RIT, WJ, HDTV
PCF-HQ190I/L*	12.0	11,8	3,2	180°/180°	160°/160°	1330/1680	170°	2 - 6 (near) 5 - 100	NBI, TXI ¹ , RDI ¹	DF, OT, RIT,SG, WJ, HDTV
PCF-H190DI/L*	11.8	11.7	3.2	180°/180°	160°/160°	1330/1680	170°	2 - 100	NBI, TXI ¹ , RDI ¹	CF, OT, RIT, SG, WJ, HDTV
PCF-H190I/L*	11.5	11.7	3.2	180°/180°	160°/160°	1330/1680	170°	2 - 100	NBI, TXI ¹ , RDI ¹	CF, OT, RIT, WJ, HDTV
PCF-H190TI/L*	10.5	9.8	3.2	210°/180°	160°/160°	1330/1680	140°	2 - 100	NBI, TXI ¹ , RDI ¹	CF, OT, RIT (HFT, VS), WJ, HDTV
PCF-PH190I/L*	9.5	9.7	3.2	180°/180°	160°/160°	1330/1680	140°	2 - 100	NBI, TXI ¹ , RDI ¹	CF, OT, RIT (HFT, PB), HDTV
CF-H185I/L*	12.8	12.8	3.7	180°/180°	160°/160°	1330/1680	140°	2 - 100	NBI, TXI ¹ , RDI ¹	CF, OT, VS, WJ, HDTV
CF-2T160L	13.7	13.8	3.7/3.2	180°/180°	160°/160°	1665	140°	3 - 100	—	—
CF-HQ290ZI/L*	12.8	13.2	3.7	180°/180°	160°/160°	1330/1680	90° (tele) 170°	2 - 3 (tele) 7 - 10	NBI, TXI ¹ , RDI ¹	OT, RIT, WJ, HDTV, Zoom
CF-H290ECI*	12.8	12.8	3.2	180°/180°	160°/160°	1330	140°	7 - 100	NBI, TXI ¹ , RDI ¹	OT, RIT (HFT, VS), WJ, HDTV, EC
PCF-H290ZI/L*	11.8	11.7	3.2	180°/180°	160°/160°	1330/1680	85° (tele) 170°	1 - 2 (tele) 7 - 100	NBI, TXI ¹ , RDI ¹	OT, RIT, WJ, HDTV, Zoom
CF-FH260AZI/L**	13.2	14.8	3.2	180°/180°	160°/160°	1330/1680	80° (tele) 140°	2 - 3 (tele) 7 - 10	NBI	AFI, VS, WJ, HDTV, Zoom

* with CV-1500 only

* with CV-190 (PLUS) and CV-1500 only

• with CV-290 and CV-1500 only •• with CV-290/-260SL only

¹ only when connected to CV-1500 ² Image-Enhanced Endoscopy

EDOF = Extended Depth of Focus OT = One-Touch Connector

DF = Dual Focus CF = Close Focus HFT = High-Force Transmission

RIT = Responsive Insertion Technology SG = ScopeGuide WJ = Water Jet

VS = Variable Stiffness EC = Endocytoscope AFI = Auto-Fluorescence Imaging

Medical Endoscopes

	Insertion Tube OD (mm)	Distal End OD (mm)	Channel ID (mm)	Bending (Up/Down)	Rotation Function (Left/Right)	Working Length (mm)	Field of View	Depth of Field (mm)	IEE ²	Comments
Video Bronchoscopes										
BF-XT190*	6.3	6.1	3.2	180°/130°	120°/120°	600	110°	2 - 50	NBI, TXI ¹ , RDI ¹	OT
BF-1TH190*	6.0	6.2	2.8	180°/130°	120°/120°	600	120°	3 - 100	NBI, TXI ¹ , RDI ¹	HDTV, OT, ROTATION
BF-H190*	5.1	5.5	2.0	210°/130°	120°/120°	600	120°	3 - 100	NBI, TXI ¹ , RDI ¹	HDTV, OT, ROTATION
BF-Q190*	4.9	4.8	2.0	210°/130°	120°/120°	600	120°	3 - 100	NBI, TXI ¹ , RDI ¹	OT, ROTATION
BF-P190*	4.1	4.2	2.0	210°/130°	120°/120°	600	110°	2 - 50	NBI, RDI ¹	OT, ROTATION
BF-MP190F*	3.7	3.0	1.7	210°/130°	120°/120°	600	90°	2 - 50	—	OT, ROTATION
BF-XP190*	2.8	3.1 ^o	1.2	210°/130°	120°/120°	600	110°	2 - 50	NBI	OT, ROTATION
BF-1T180	6.0	6.0	3.0	180°/130°	—	600	120°	3 - 100	NBI	—
BF-Q180-AC	5.3	5.5	2.0	180°/130°	—	600	120°	3 - 100	NBI	Autoclavable
BF-1TQ290*	6.0	5.9	3.0	180°/130°	120°/120°	600	120°	2 - 100	NBI, TXI ¹ , RDI ¹	OT, ROTATION
BF-H290*	5.7	6.0	2.0	210°/130°	120°/120°	600	120°	3 - 100	NBI, TXI ¹ , RDI ¹	HDTV, OT, ROTATION
BF-Q290*	4.9	4.8	2.0	210°/130°	120°/120°	600	120°	2 - 100	NBI, TXI ¹ , RDI ¹	OT, ROTATION
BF-P290*	4.1	4.2	2.0	210°/130°	120°/120°	600	110°	2 - 50	NBI, TXI ¹ , RDI ¹	OT, ROTATION
BF-MP290F*	3.7	3.0	1.7	210°/130°	120°/120°	600	90°	2 - 50	—	OT, ROTATION
BF-XP290*	2.8	3.1	1.2	210°/130°	120°/120°	600	110°	2 - 50	NBI, RDI ¹	OT, ROTATION
BF-1T260***	6.0	5.9	2.8	180°/130°	—	600	120°	3 - 100	NBI	—
BF-F260**	5.4	5.5	2.0	180°/130°	—	600	120°	3 - 100	—	AFI
Airway Mobilescopes										
MAF-TM2	5.2	5.1	2.6	180°/130°	—	600	90°	3 - 50	—	Display rotation: 90° right /90° left tilting: 0 - 120° Display size: 3.5"
MAF-GM2	4.1	3.9	1.5	120°/120°	—	600	90°	4 - 50	—	
MAF-DM2	3.1	3.1	1.2	120°/120°	—	600	90°	2 - 50	—	

* with CV-190 (PLUS) and CV-1500 only • with CV-290 and CV-1500 only

•• with CV-290/-260SL only ••• with CV-290/-260SL/-240/-230/-200 only

^o tapered part of distal end 2.9 mm

¹ only when connected to CV-1500 ² Image-Enhanced Endoscopy

OT = One-Touch Connector ROTATION = Insertion Tube Rotation Function
AFI = Auto-Fluorescence Imaging

Medical Endoscopes

	Insertion Tube OD (mm)	Distal End OD (mm)	Channel ID (mm)	Bending (Up/Down)	Rotation Function (Left/Right)	Working Length (mm)	Field of View	Depth of Field (mm)	IEE ²	Comments
Video Pleuroscopes (Medical Thoracoscopy)										
LTF-160	7.0	7.0	2.8	160°/130°	—	270	120°	3 - 100	—	Autoclavable
LTF-260^{•••}	7.0	6.9	2.8	160°/130°	—	270	120°	3 - 100	NBI	Autoclavable

^{•••} with CV-290/-260SL/-240/-230/-200 only

² Image-Enhanced Endoscopy

Medical Endoscopes

Medical Fiber Endoscopes

	Insertion Tube OD (mm)	Distal End OD (mm)	Channel ID (mm)	Bending (Up/Down)	Bending (Left/Right)	Working Length (mm)	Field of View	Depth of Field (mm)	Comments
Fiber Bronchoscopes									
BF-1T60	6.0	5.9	3.0	180°/130°	—	600	120°	3 - 50	—
BF-P60	5.0	4.9	2.2	180°/130°	—	600	120°	3 - 50	—
BF-MP60	4.4	4.0	2.0	180°/130°	—	600	120°	3 - 50	—
BF-XP60	2.8	2.8	1.2	180°/130°	—	600	90°	2 - 50	—
BF-N20	2.2	1.8	—	160°/90°	—	550	75°	2 - 50	—
BF-TE2	6.0	5.9	2.8	180°/130°	—	600	120°	3 - 50	—
BF-PE2	5.0	4.9	2.2	180°/130°	—	600	120°	3 - 50	—

Endoscopy Integration

Olympus provides the total integration solution for endoscopy, consisting of modular components that are combined to meet the individual needs of the hospital. Utmost support is ensured throughout the workflow from patient reception to the examination, via the reprocessing and recovery areas, ending in the doctor's office and training room facilities.



Examination Room

A high level of ergonomics, efficiency, and communication in a modern and friendly ambience.

- Optimized workspace and patient comfort
- Integrated HD documentation system
- Saving space, examination, and cleaning time



Reprocessing Area

Hygiene supports and secures the endoscope's workflow with full traceability and documentation of all relevant reprocessing steps.

- ETD Double and ETD4 washer disinfectors
- EDC Plus Drying and storage cabinets



Recovery Area

Patient comfort and safety in perfection – a central overview of the status of the rooms, support smooth processes and a stressless atmosphere.

- Access to status of endoscopy room
- Patient-care documentation for recovery nurse



Doctor's Office

In the office but with an optimal audio/video connection to the examination rooms. Access from the PC to all data and images and reporting system.

- Access to centralized patient/procedure information
- Audio/video connection to examination rooms
- Tools for activity and cost analysis



Training / Meeting Room

The media center for training, courses, and seminars with advanced video management, including live video and bidirectional communication from examination rooms.

- Access/display of departmental activity information
- IP audio/video routing and multi-display functionality

Endoscopic Ultrasound

Endoscopic Ultrasound									
	Insertion Tube OD (mm)	Channel ID (mm)	Bending (Up/Down Left/Right)	Working Length (mm)	Ultrasound Field of View	Endoscopic Field of View (Forward/Oblique)	Depth of Field (mm)	Frequency (MHz)	Scanning Mode
Ultrasonic Videoscopes for EUS									
GF-UE190	10.9	2.2	130°/90° 90°/90°	1250	360°	100°/50°	3 - 100	5/6/7.5/10/12*	Electronic 360° radial array
GF-UCT180	12.6	3.7	130°/90° 90°/90°	1250	180°	100°/55°	3 - 100	5/6/7.5/10/12*	Electronic curved linear array
TGF-UC180J	12.6	3.7	180°/90° 90°/90°	1245	90°	120°/0°	3 - 100	5/6/7.5/10/12*	Forward-viewing, electronic curved linear array
TGF-UC260J	12.6	3.7	180°/90° 90°/90°	1245	90°	120°/0°	3 - 100	5/6/7.5/10/12*	Forward-viewing, electronic curved linear array
Ultrasonic Endoscopes for EBUS									
BF-UC190F**	6.3	2.2	160°/70° —	600	65°	80°/20°	2 - 50	5/6/7.5/10/12*	Electronic curved linear array
BF-UC180F**	6.3	2.2	120°/90° —	600	60°	80°/35°	2 - 50	5/6/7.5/10/12*	Electronic curved linear array
BF-UC290F**	6.3	2.2	160°/70° —	600	65°	80°/20°	2 - 50	5/6/7.5/10/12*	Electronic curved linear array
BF-UC260FW**	6.3	2.2	120°/90° —	600	60°	80°/35°	2 - 50	5/6/7.5/10/12*	Electronic curved linear array

* with EU-ME2. Please contact your Olympus representative for compatibility with other systems.

** fiber videoscope for the best ratio between outer diameter and working channel size

Endoscopic Ultrasound

	Frequency (MHz)	Working Length (mm)	Insertion Tube OD (mm)	Comp. Biopsy Channel (mm)	Compatible with	Comp. Biopsy Channel (mm) for Sheath	Scanning Mode
Ultrasonic Miniature Probes							
UM-2R/3R	12/20	2050	2.5	2.8	MH-246R Balloon Sheath	3.7	Mechanical radial
UM-S20-17S	20	2150	Max. 1.8	1.7	K-201/K-202 GuideSheathKit	2.0	Mechanical radial
UM-S20-20R	20	2050	Max. 2.0	2.2 *	K-203/K-204 GuideSheathKit	2.6	Mechanical radial
UM-BS20-26R	20	2050	Use only with:		MAJ-643R Balloon Sheath	2.8	Mechanical radial
UM-G20-29R***	20	2050	Max. 2.9	3.2	Not used with balloon sheath		Mechanical radial
UM-DG20-31R***	20	2050	Max. 3.1	3.7	Not used with balloon sheath		Mechanical helical for Dual Plane
UM-DP12-25R	12	2050	2.5	2.8	Not used with balloon sheath		Reconstruction (DPR)
UM-DP20-25R	20	2050	2.5	2.8	Not used with balloon sheath		

*** equipped with a 0.035" guidewire port at the distal end
 * 2.0 mm in bronchoscopes

Surgical Endoscopes

Surgical Video Endoscopes

	Insertion Tube OD (mm)	Distal End OD (mm)	Channel ID (mm)	Bending (Up/Down)	Bending (Left/Right)	Working Length (mm)	Direction of View	Field of View	Depth of Field (mm)	IEE ²	HDTV/SDTV
ENDOYEYE Laparoscopes											
ENDOYEYE 3D, 10 mm 0°	10.0	10.0	-	-	-	330	0°	57°	25 - 120	NBI	HDTV
ENDOYEYE 3D, 10 mm 30°	10.0	10.0	-	-	-	335	30°	57°	25 - 120	NBI	HDTV
ENDOYEYE FLEX 3D, 10 mm	10.0	10.0	-	100°/100°	100°/100°	370	0°	80°	18 - 100	NBI	HDTV
ENDOYEYE HD II, 10 mm 0°	10.0	10.0	-	-	-	325	0°	90°	21 - 200	NBI	HDTV
ENDOYEYE HD II, 10 mm 30°	10.0	10.0	-	-	-	330	30°	90°	21 - 200	NBI	HDTV
ENDOYEYE FLEX, 10 mm	10.0	10.0	-	100°/100°	100°/100°	370	0°	100°	18 - 200	NBI	HDTV
ENDOYEYE HD II, 5 mm 0°	5.4	5.4	-	-	-	325	0°	90°	21 - 200	NBI	HDTV
ENDOYEYE HD II, 5 mm 30°	5.4	5.4	-	-	-	330	30°	90°	21 - 200	NBI	HDTV
ENDOYEYE FLEX, 5 mm	5.4	5.3	-	100°/100°	100°/100°	370	0°	85°	18 - 100	NBI	HDTV
Cystoscopes											
CYF-VH/-VHA/-VHR	5.5	2.7	2.2	220°/130°	-	380	0°	120°	3 - 50	NBI	HDTV
CYF-V2/VA2	5.4	4.8	2.2	210°/120°	-	380	0°	120°	3 - 50	NBI	SDTV
Ureterscopes											
URF-V3	2.83	2.83	1.2	275°/275°	-	670	0°	80°	1.5 - 50	NBI	SDTV
URF-V2	2.8	2.83	1.2	275°/275°	-	670	0°	80°	2 - 50	NBI	SDTV
URF-V	3.3	2.8	1.2	180°/275°	-	670	0°	90°	2 - 50	NBI	SDTV

All rigid endoscopes are compatible with EXERA III / VISERA ELITE via 3 CCD HD camera heads (HDTV), 1 CCD HD camera heads (HDTV) and via VISERA camera heads (SDTV).

² Image-Enhanced Endoscopy

Surgical Endoscopes

	Insertion Tube OD (mm)	Distal End OD (mm)	Channel ID (mm)	Bending (Up/Down)	Bending (Left/Right)	Working Length (mm)	Direction of View	Field of View	Depth of Field (mm)	IEE ²	HDTV/SDTV
Rhinolaryngoscopes											
ENF-VH2	3.6	3.9	–	130°/130°	–	300	0°	110°	3 - 50	NBI	SDTV
ENF-VH	3.6	3.9	–	130°/130°	–	300	0°	110°	3 - 50	NBI	HDTV
ENF-V4	2.9	2.6	–	130°/130°	–	300	0°	90°	4 - 50	NBI	SDTV
ENF-V3	2.9	2.6	–	130°/130°	–	300	0°	90°	3 - 50	NBI	SDTV
ENF-V2	3.4	3.2	–	130°/130°	–	300	0°	90°	5 - 50	NBI	SDTV
ENF-VT3	4.9	4.8	2.0	130°/130°	70°/70°	365	0°	90°	2 - 50	NBI	SDTV
ENF-VT2	4.9	4.8	2.0	130°/130°	–	365	0°	90°	2 - 40	NBI	SDTV
ENF-VQ	3.6	3.9	–	130°/130°	–	300	0°	90°	5 - 50	NBI	SDTV
Tracheal Intubation Scope											
LF-V	4.1	3.8	1.2	120°/120°	–	600	0°	120°	3 - 50	–	SDTV

All rigid endoscopes are compatible with EXERA III / VISERA ELITE via 3 CCD HD camera heads (HDTV), 1 CCD HD camera heads (HDTV) and via VISERA camera heads (SDTV).

² Image-Enhanced Endoscopy

Surgical Endoscopes

Surgical Fiber Endoscopes								
	Insertion Tube OD (mm)	Distal End OD (mm)	Channel ID (mm)	Bending (Up/Down)	Bending (Left/Right)	Working Length (mm)	Field of View	Depth of Field (mm)
Cystoscope								
CYF-5/5A	5.5	4.6	2.4	210°/120°	–	380	120°	3 - 50
Ureteroscopes								
URF-P7	2.83	1.63	1.2	275°/275°	–	700	90°	2 - 50
URF-P6	2.65	1.7	1.2	275°/275°	–	700	90°	2 - 50
URF-P5	2.8	1.77	1.2	180°/275°	–	700	90°	2 - 50
Rhinolaryngoscopes								
ENF-GP2	3.6	3.5	–	130°/130°	–	300	85°	5 - 50
ENF-GP	3.6	3.4	–	130°/130°	–	300	85°	5 - 50
ENF-P4	3.6	3.4	–	130°/130°	–	300	85°	2.5 - 50
ENF-XP	2.2	1.8	–	130°/130°	–	300	75°	2.5 - 50
ENF-T3	5.0	4.8	2.2	130°/130°	–	365	85°	5 - 50
Tracheal Intubation Scopes								
LF-P	2.2	1.8	–	120°/120°	–	600	75°	3 - 50
LF-GP	4.1	3.8	1.5	120°/120°	–	600	90°	4 - 50
LF-DP	3.1	3.1	1.2	120°/120°	–	600	90°	3 - 50
LF-TP	5.2	5.1	2.6	180°/130°	–	600	90°	3 - 50
Hysteroscope								
HYF-XP	3.1	3.0	1.2	100°/100°	–	230	100°	2 - 50

All fiber endoscopes are compatible with EXERA III / VISERA ELITE via 3 CCD HD camera heads (HDTV), 1 CCD HD camera heads (HDTV) and via VISERA camera heads (SDTV).

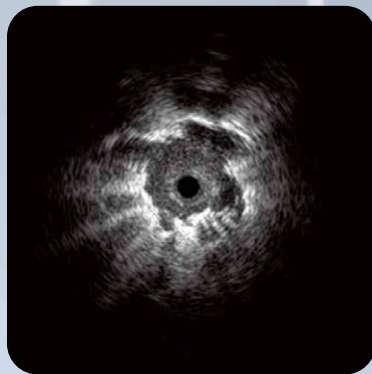
Advancing the Art of Bronchoscopy

Finding and Sampling of Peripheral Pulmonary Lesions

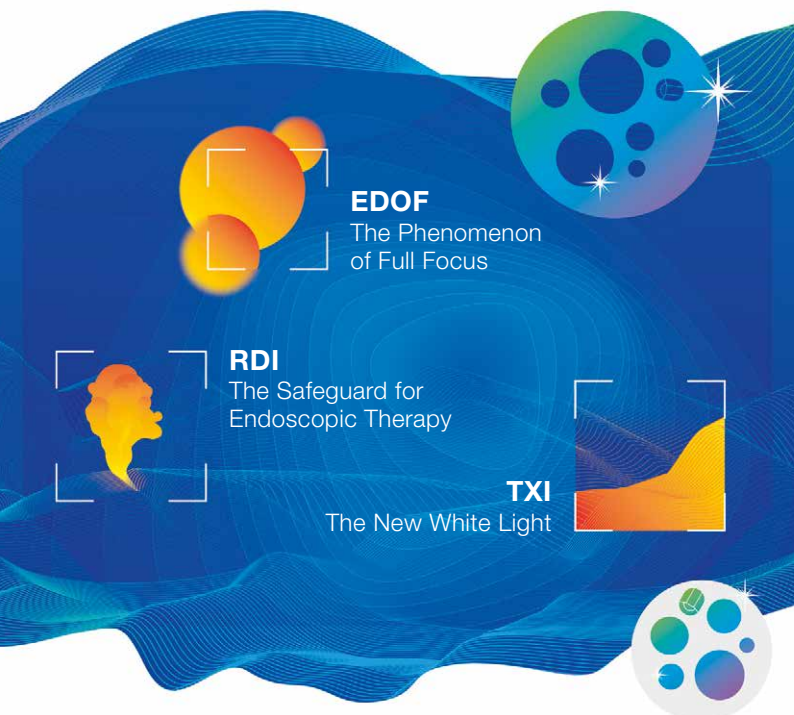
Peripheral Pulmonary Lesion

Real-time confirmation of the lesion through endobronchial ultrasound using an EBUS miniature probe.

Combining EBUS with a GuideSheath enables easy and repeated access to the lesion via sampling devices.



23654



EDOF
The Phenomenon
of Full Focus



RDI
The Safeguard for
Endoscopic Therapy




TXI
The New White Light



Let's Be Clear

Elevating the Standard of Endoscopy

 www.olympus.eu/evix1

EVIS X1



E0429551 · 05/20 · OKM

Subject to change without notice. Liability for errors and omissions excepted.

OLYMPUS

OLYMPUS EUROPA SE & CO. KG
Postbox 10 49 08, 20034 Hamburg, Germany
www.olympus-europa.com